

EXCALIBUR GROUP, LLC

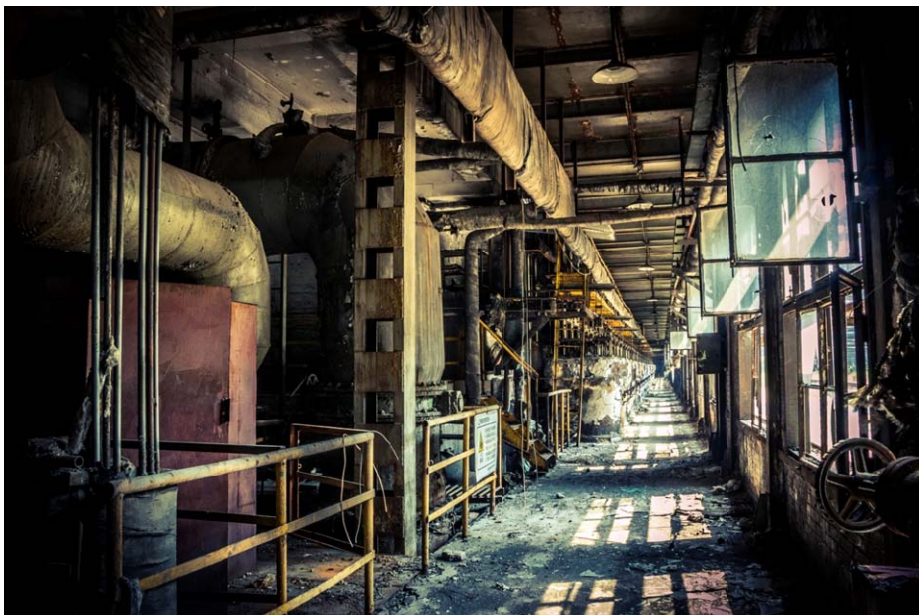
SERVICES

CORPORATE OFFICE

1350 Beverly Rd. #443
McLean, VA 22101

OTHER LOCATIONS

- Downingtown, PA
- Monessen, PA
- New Market, MD
- Cary, NC
- Denver, CO



ENVIRONMENTAL LIABILITY & ASSET MANAGEMENT



- Expert technical & financial reviews
- Cost estimating / forecasting
- Site security
- Regulatory reporting / interfacing
- Contractor management
- Data collection / interpretation
- Phase I, II & III ESAs
- Regulatory compliance
- Remediation
- O&M / monitoring
- Risk-based closures
- Site restoration

EXCALIBUR helps clients identify, define, forecast and manage assets with respect to environmental liabilities so they can stay focused on their businesses and minimize bottom line impacts. Multi-national, Fortune 500, chemical, energy, manufacturing, engineering and construction, insurance, commercial and other types of companies, environmental indemnification funds, law firms, and others seek out **EXCALIBUR's** professional advice on managing their liabilities and assets from an environmental perspective. And as a direct result of our counsel, the vast majority of our clients realize significant cost savings, operational efficiencies, accelerated project completions, less regulatory scrutiny, and other tangible benefits.

EXCALIBUR's philosophy, client advocacy, and depth of experience keep our clients on the cutting edge in solving the most challenging environmental problems.

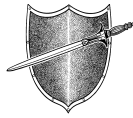
EXCALIBUR GROUP, LLC

CUTTING EDGE SOLUTIONS

KEY/ REPEAT CUSTOMERS

- ACE INSURANCE
- ALEXANDRIA METAL FINISHERS
- BAKER BOTTS LLP
- BB&T
- CDM
- CHUBB INSURANCE
- CONOCO-PHILLIPS
- DEWBERRY
- DEVOS & CO., LLP
- ICF INTERNATIONAL
- JACK RICH ENERGY
- LIBERTY MUTUAL
- MITSUBISHI
- MWH
- PA UST INSURANCE
- REILLY INDUSTRIES
- SALTIRE INDUSTRIAL
- SHERWIN-WILLIAMS
- SHIPLEY ENERGY
- SHISEIDO AMERICA
- TITAN
- URS

www.excaliburgrp.com



ENVIRONMENTAL CONSULTANTS, ENGINEERS
AND LIABILITY MANAGEMENT EXPERTS

EXCALIBUR's liability asset managers help client root out and correct for mistakes in baseline environmental investigations, engineering designs, remedial technology recommendations and construction work plans. We help clients autopsy legacy projects, examine ongoing static projects for improvements, and provide keen, well thought out advice on site closures that are in the planning or near-launch phases. **EXCALIBUR** flags serious invoice mistakes, has corrected absolutely wrong remedial technology choices, devised much more streamlined civil engineering and scaled back overblown earthworks plans, helped clients avoid unnecessary environmental permitting and reporting redundancies, forecast better waste management/ disposal options, and repeatedly shown client cost savings through innovative competitive bidding or collaborative interaction with long-standing service providers to clients.

EXCALIBUR assists it's clients with site security, regulatory reporting / interfacing, data collection & database maintenance, contractor & site management, community relations, O&M, monitoring, closure / restoration, improvements and other asset management activities.

